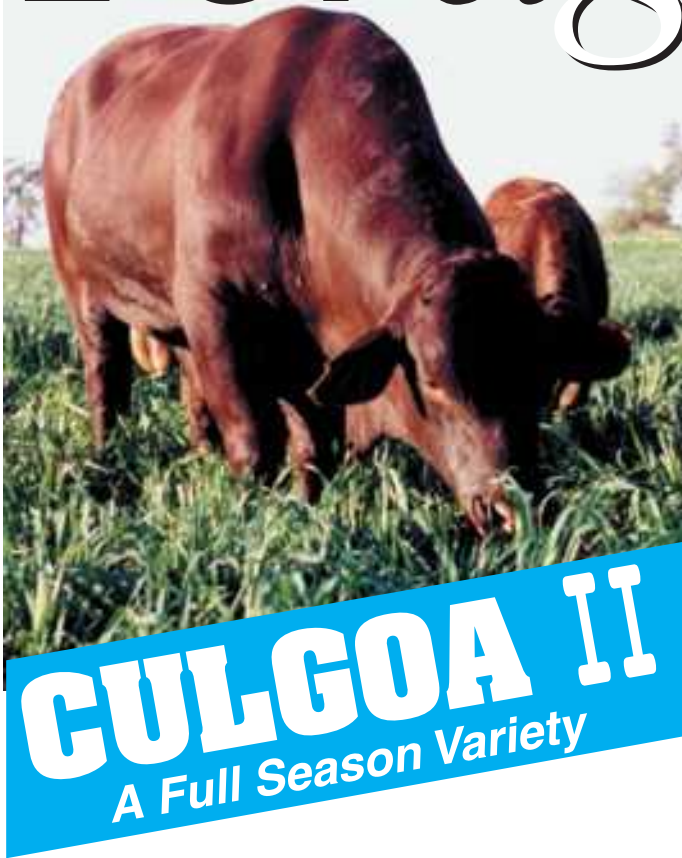
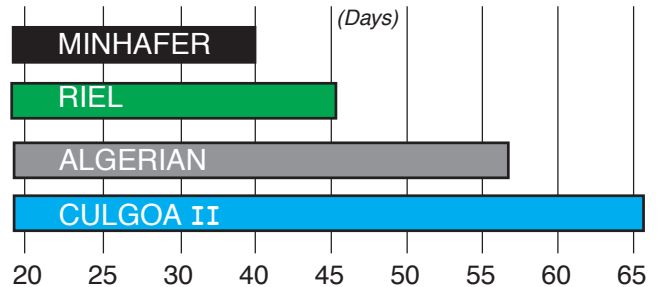


# Forage Oats

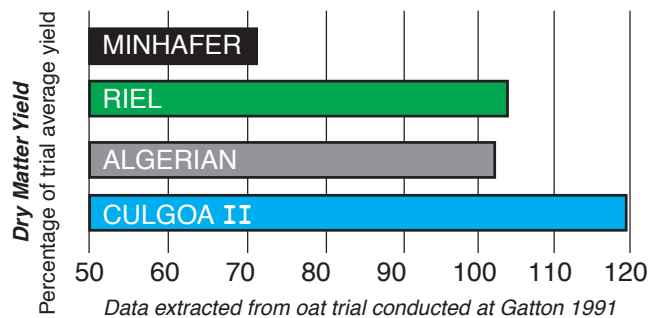


## Sowing to first grazing



NB: Time of sowing for all oat varieties dramatically affects rate of growth to first grazing and overall maturity time. As a general rule all varieties sown early, whether they be quick or slow varieties will be quicker to first grazing stage and take longer to mature (having the advantage of the full growing season) than will the later sown.

## Oat Production Trial



New Generation Culgoa II was developed to rectify the problem of quicker, rust susceptible off-types found in previous seedlots of Culgoa.

- Full season variety
- Suited to early sowing
- Semi-prostrate early growth habit
- Even crop with extended production period
- Suited to both dryland and irrigation.

## Agronomic Features

Variety	Early growth habit	Speed to initial grazing*	Early plant	Suitable for Extended production
<b>CULGOA II</b>	Semi Prostrate	Slow	✓	✓

\*Varies with planting date: Value here based on mid March-April sowing



Forage oats can be planted alone or with a wide range of legumes to give excellent grazing or silage. The Culgoa II seen here was sod sown into existing lucerne and Namoi vetch pasture.



Queensland Agricultural Seeds Pty Ltd  
 ACN 010 729 183  
 366-368 Anzac Avenue (P.O. Box 1052)  
 Toowoomba Qld 4350  
 Phone: 07 4630 1000  
 Fax: 07 4630 1005  
 Email: [pastures@qaseeds.com.au](mailto:pastures@qaseeds.com.au)